

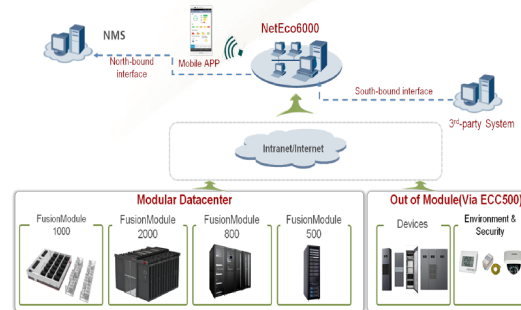
Data Center Facility Management System

NetEco6000

Introduction

NetEco6000 is a new generation data center management system launched by Huawei. It manages the real-time data and status of data center facility, including power, environment, air conditioner CCTV, access etc and generates alarms if any fault occurs.

NetEco6000 could support remote management by PAD, and provide functional assets, capacity, energy efficiency, alarms, reports, etc., to give you convenience and good experience.



Application Scenarios

- Large DC: ISP, Operators , Headquarter of Banks, Cloud DC etc.
- Multiple DC: Bank branches, Rail transportation, etc.

Value & Benefit

Simple

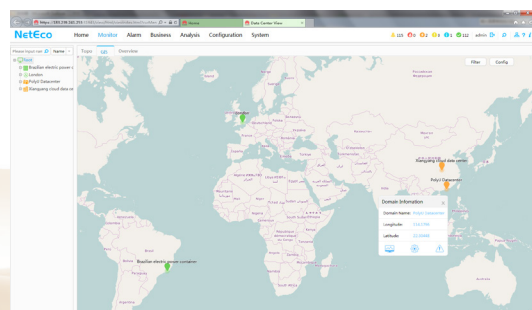
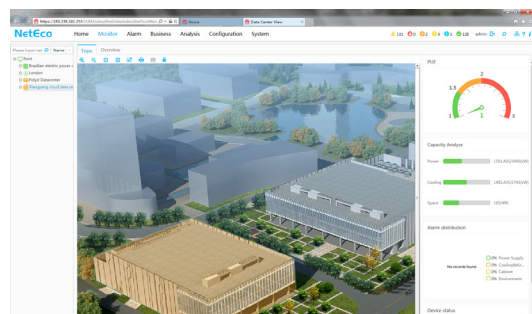
- Simple Delivery
Pre-installation, automatically upload devices' parameters, reduce 90% debugging time
- Simple Usage
UI design based on scenarios, simple web interface & APP, simple operation
- Simple Expansion
Online expansion

Efficient

- Efficient Resource Usage
Asset life-cycle management, balanced planning of power, cooling and space, full utility of capacity resource in data center
- Efficient O&M
Remotely update device software, automatically filter invalid alarms, guide maintenance process, automatically push maintenance report

Reliable

- Reliable Data Center
Collect data every second, pre-alarm for component, fast fault location
- Reliable System
Data encryption during analysis, transmission and storage, reinforcement design of OS and DB, anti-virus and vulnerability scanning test



Specification & Feature

Items	Specification		
System Capacity	RH2288 simple configuration	RH2288 medium configuration	RH5885 high configuration
	500 smart nodes 20,000 parameters	1000 smart nodes 100,000 parameters	5000 smart nodes 400,000 parameters
Platform Function	B/S, online help		
Networking Solution	IP Networking		
Southbound interface	SNMP \ Modbus etc		
Northbound interface	SNMP \ Webservice \ C interface etc		
ECC500	Maximum support 20 RS485 communication interfaces or 128 AI / DI access (chosen Independent Deployment AI/DI Module)		

Items	Features
Real-time Monitoring	GIS site Map ,real-time monitoring, 2D/3D GUI, customized real-time counter subscription and my workspace
Alarm Mgmt.	3 Level warnings, alarm collection and storage, alarm browse, alarm notification, alarm processing, alarm setting, dry contact alarm management, alarm masking and alarm thresholds setting
Configuration Mgmt.	Controller discovery, graphical drag and drop site configuration, batch DC copy and batch parameters modification, configuration data export to EXCEL
Data Mgmt.	NetEco6000 and database support automatic backup and recovery NetEco6000 Historical data is saved for 30 days by default , automatically covered Daily Report data is saved by default 90 days , the monthly report data saved by default 2 years , the annual report data saved by default for 5 years Alerting data retention period can be set to the default 100 days Log data retention period can be set to the default 100 days
Report Mgmt.	Historical data collection, query, statistical analysis, report management; customized report, automatic periodic report
Security Mgmt.	Network security management, role and operation authority management, user and password management, operation authentication, log management, CCTV and Access centralized management
Optional Features	Capacity Mgmt, APP, Energy efficiency management, iBMS, Power distribution system and Chiller water system management, etc.

Copyright © Huawei Technologies Co., Ltd. 2016. All rights reserved.

No part of this document may be reproduced or transmitted in any form or by any means without prior written consent of Huawei Technologies Co., Ltd.

General Disclaimer

The information in this document may contain predictive statements including, without limitation, statements regarding the future financial and operating results, future product portfolio, new technology, etc. There are a number of factors that could cause actual results and developments to differ materially from those expressed or implied in the predictive statements. Therefore, such information is provided for reference purpose only and constitutes neither an offer nor an acceptance. Huawei may change the information at any time without notice.

HUAWEI TECHNOLOGIES CO., LTD.

Huawei Industrial Base
Bantian Longgang
Shenzhen 518129, P.R. China
Tel: +86-755-28780808

www.huawei.com